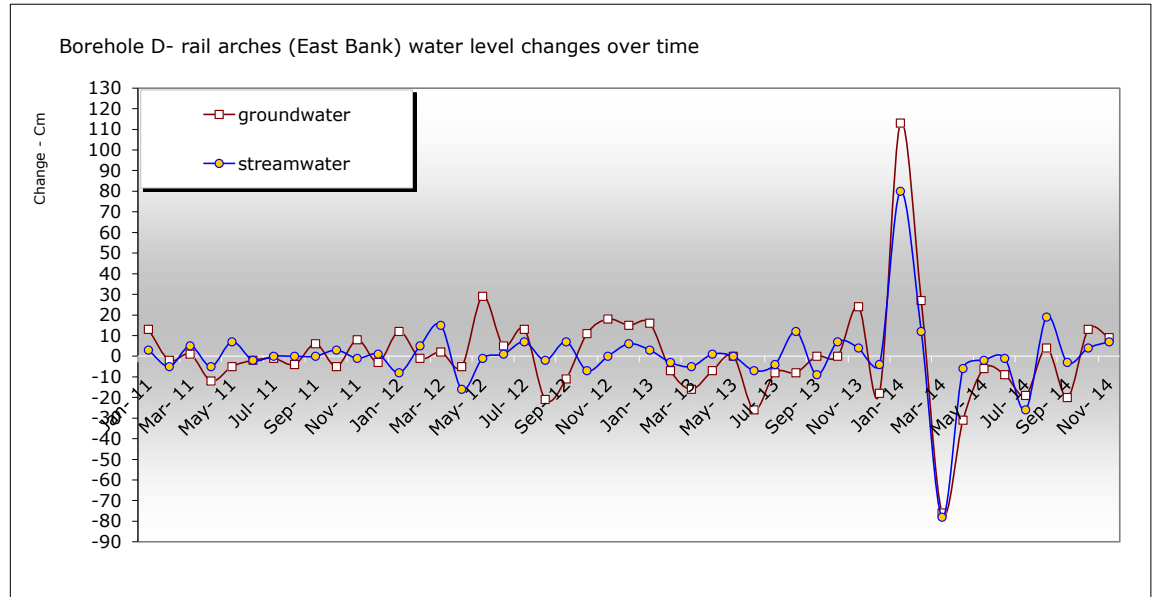
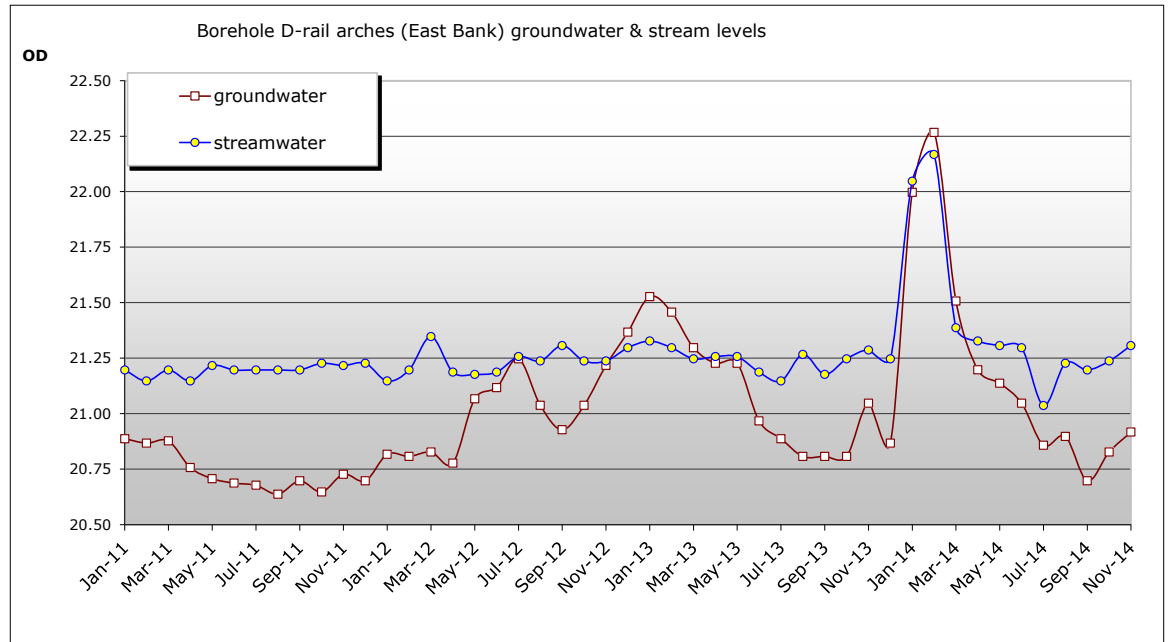


Borehole D				Brunel Arch South 13			
well head	measured depth to ground water	absolute ground water (OD)	change in period	arch buttress (OD)	measured depth to stream	absolute stream water (OD)	change in period
<b>23.7973</b>				<b>23.497</b>			
(OD)	cms	mtrs	cms	(OD)	cms	mtrs	cms
Jan-11	291	20.89	13	230	21.20	3	
Feb-11	293	20.87	-2	235	21.15	-5	
Mar-11	292	20.88	1	230	21.20	5	
Apr-11	304	20.76	-12	235	21.15	-5	
May-11	309	20.71	-5	228	21.22	7	
Jun-11	311	20.69	-2	230	21.20	-2	
Jul-11	312	20.68	-1	230	21.20	0	
Aug-11	316	20.64	-4	230	21.20	0	
Sep-11	310	20.70	6	230	21.20	0	
Oct-11	315	20.65	-5	227	21.23	3	
Nov-11	307	20.73	8	228	21.22	-1	
Dec-11	310	20.70	-3	227	21.23	1	
Jan-12	298	20.82	12	235	21.15	-8	
Feb-12	299	20.81	-1	230	21.20	5	
Mar-12	297	20.83	2	215	21.35	15	
Apr-12	302	20.78	-5	231	21.19	-16	
May-12	273	21.07	29	232	21.18	-1	
Jun-12	268	21.12	5	231	21.19	1	
Jul-12	255	21.25	13	224	21.26	7	
Aug-12	276	21.04	-21	226	21.24	-2	
Sep-12	287	20.93	-11	219	21.31	7	
Oct-12	276	21.04	11	226	21.24	-7	
Nov-12	258	21.22	18	226	21.24	0	
Dec-12	243	21.37	15	220	21.30	6	
Jan-13	227	21.53	16	217	21.33	3	
Feb-13	234	21.46	-7	220	21.30	-3	
Mar-13	250	21.30	-16	225	21.25	-5	
Apr-13	257	21.23	-7	224	21.26	1	
May-13	257	21.23	0	224	21.26	0	
Jun-13	283	20.97	-26	231	21.19	-7	
Jul-13	291	20.89	-8	235	21.15	-4	
Aug-13	299	20.81	-8	223	21.27	12	
Sep-13	299	20.81	0	232	21.18	-9	
Oct-13	299	20.81	0	225	21.25	7	
Nov-13	275	21.05	24	221	21.29	4	
Dec-13	293	20.87	-18	225	21.25	-4	
Jan-14	180	22.00	113	145	22.05	80	
Feb-14	153	22.27	27	133	22.17	12	
Mar-14	229	21.51	-76	211	21.39	-78	
Apr-14	260	21.20	-31	217	21.33	-6	
May-14	266	21.14	-6	219	21.31	-2	
Jun-14	275	21.05	-9	220	21.30	-1	
Jul-14	294	20.86	-19	246	21.04	-26	
Aug-14	290	20.90	4	227	21.23	19	
Sep-14	310	20.70	-20	230	21.20	-3	
Oct-14	297	20.83	13	226	21.24	4	
Nov-14	288	20.92	9	219	21.31	7	



**Ground level 23.7973m (OD) Arch Butress(DownStream) 23.4978 (OD)**



MWRG takes no responsibility for the accuracy of the data contained on this sheet. All topographical survey levels, rainfall figures, on-site measurements and their graphical representations must be confirmed for their accuracy by a suitably qualified professional surveyor and engineer.